



## MULETRAX 2300 C

OUR VERSATILE PIPELINE VEHICLES ARE EXTREMELY CUSTOMIZABLE: SPECIAL SETTINGS ARE POSSIBLE ON CUSTOMER'S DEMAND AND THE POSSIBILITY OF COLLABORATE WITH OUR TECHNICAL DEPARTMENT WILL AUGMENT THE CHANCES TO FIND THE PERFECT SOLUTION IN TERMS OF TECHNOLOGY, PERFORMANCE, QUALITY AND SAFETY.

### STANDARD FEATURES and OPTIONAL

REGULAR PLATFORM	STANDARD
REMOVABLE PLATFORM WITH TWIST	OPTIONAL
LOCK FASTENERS	
REMOTE CONTROLLED CRANE	OPTIONAL
CRANE CAPACITY UP TO 8,5 tm	OPTIONAL
FOLDABLE CRANE*	STANDARD
CABIN WITH AIR CONDITIONING	OPTIONAL
CABIN WITH ROLL-BAR	-
HYDRAULIC LOWERING CABIN**	STANDARD
STEEL UNDERCARRIAGE	-
RUBBER UNDERCARRIAGE	STANDARD
FLOATING UNDERCARRIAGE	-
HYDRAULIC WELDING BOTTLE RACK	OPTIONAL
WORKSHOP CONTAINER	OPTIONAL
HYDRAULIC DRIVE ALTERNATOR	OPTIONAL
PIPE CARRIER SADDLES	-
FUEL TANK	-
DUMPER	-
SATELLITE TELEMETRY	OPTIONAL

\*\* For container transportation

### TECHNICAL DATA

TRACK WIDTH	2,3 m
SHOES WIDTH	600 mm
MAX OPERATING SLOPE	30°
OPERATING CONTROL	Joy-stick
TRAVEL SPEED	0-9 Km/h
TOTAL WEIGHT	12.600 Kg*

\*With full tanks and configuration as in the figure below

### ENGINE

TYPE	CATERPILLAR
MODEL	C4.4 ACERT
POWER	142 Hp (106 Kw) @2200 rpm
DISPLACEMENT	4,4 litres

### HYDRAULIC SYSTEM

MAIN PUMPS	Danfoss
2 independent hydrostatic variable pumps travel	
MAX OPERATING PRESSURE	400 bar

### FLUID CAPACITIES

FUEL TANK	190 litres
HYDRAULIC OIL TANK	195 litres


### ELECTRIC SYSTEM

OPERATING VOLTAGE	24 V
CAPACITY	2 x 74 Ah
ALTERNATOR	50 A

### TRANSMISSION

TYPE	Hydrostatic
MOTORS	Bosch-Rexroth


## MULETRAX 2300 C

 **MULETRAX 2300 C** è un trattore cingolato multifunzione ideato come mezzo di supporto per diverse fasi della saldatura dei giunti e altre applicazioni: saldatura sabbatura, rivestimento dei giunti ecc. La cabina può essere abbassata e la gru ripiegata sulla piattaforma per permettere alla macchina di essere trasportata all'interno di container ISO standard. (Caratteristiche base e optional nella pagina seguente →).




 **MULETRAX 2300 C** is a multipurpose tractor designed as auxiliary vehicle for various joint welding systems and other applications: welding, blasting, coating etc. The cabin can be lowered and the crane folded down onto the platform to enable transport in standard ISO containers. The machine can be equipped with rubber track or standard steel. (Standard features and optional on the following page →).

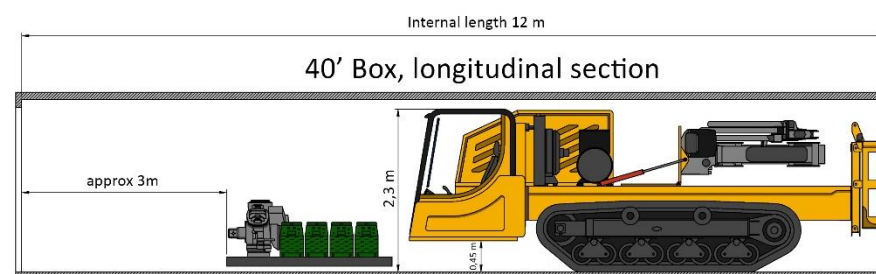


 **MULETRAX 2300 C** es un tractor de orugas multifunción ideado como medio de soporte para distintos sistemas de soldadura de las juntas y otras aplicaciones: arenadura, fajadura, etc. La cabina puede descender y la grúa puede ser replegada sobre la plataforma para que sea posible transportar la máquina en el interior de contenedores ISO estándar. La máquina puede suministrarse con tren de rodaje de goma o de acero tradicional. (Características estándar y optional en la página siguiente →).

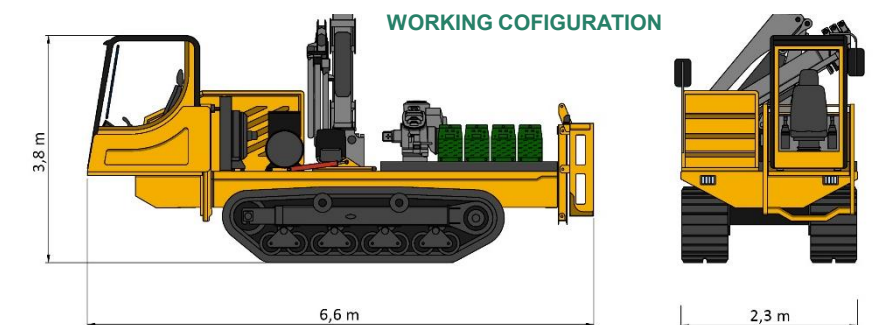
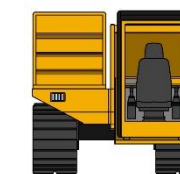


 **MULETRAX 2300 C** est un tracteur à chenilles multifonction conçu comme engin de support pour différents systèmes de soudage des joints et autres applications: soudure, sablage, revêtement etc. La cabine peut être abaissée et la grue repliée sur la plateforme pour permettre de transporter l'engin dans un conteneur ISO standard. La machine peut être fournie avec chenilles en caoutchouc ou en acier traditionnel. (Caractéristiques standard et optional à la page suivante →).

### ★TELEMATIC SOLUTIONS AVAILABLE ON REQUEST FOR EVERY MACHINE



### SHIPMENT CONFIGURATION



### WORKING COFIGURATION

SHIPPING: it can be transported using one 40' box

