

LAURINI PIPELAYERS

SansOne 100

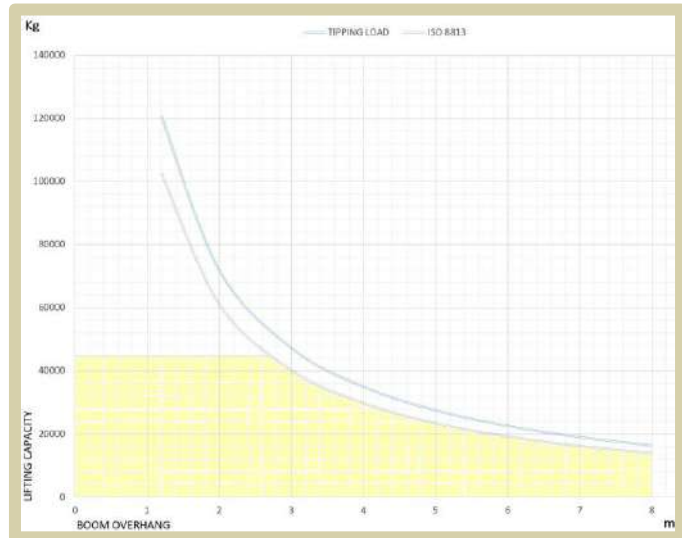
TECHNICAL DATA SHEET



SansOne 100

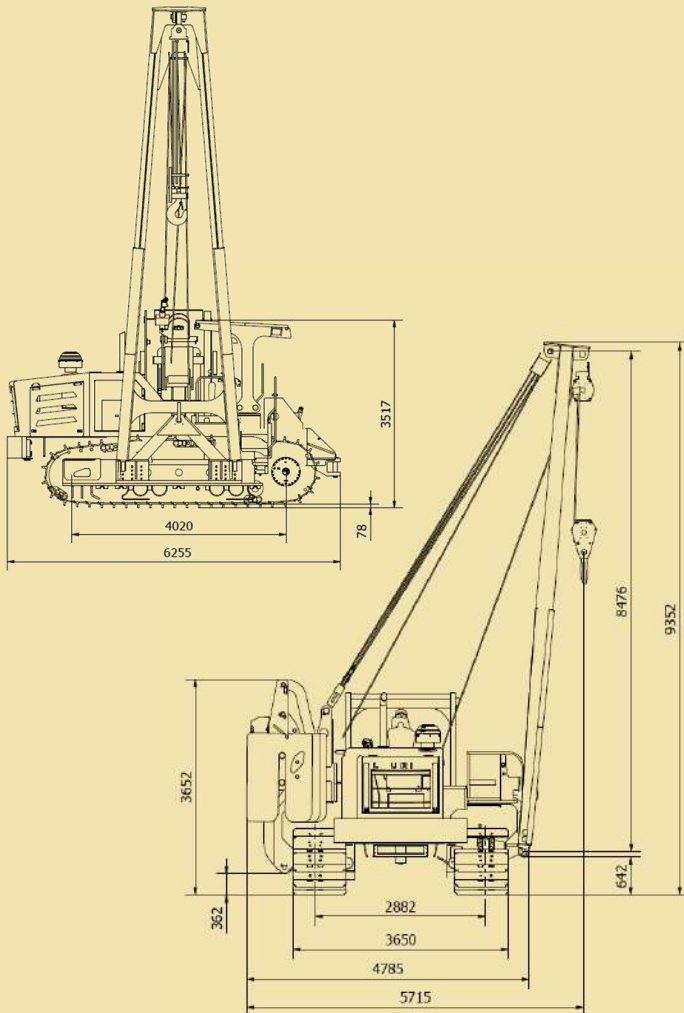


LIFTING CAPACITY WITH EXTENDED COUNTERWEIGHT



With **SansOne 100** safety is guaranteed: the low profile of the hood, the **two cameras**, the **12" touch screen display**, showing machine and engine parameters in real time and the **Swivel Seat** give the driver a 360 degrees visibility, total control and best comfort.

The **anti-tipping system** gives great stability to the whole machine. Additional benefits come from the position of the radiator, placed laterally and from the oil exchanger, integrated into **extendable counterweight** frame.



TRANSPORTABILITY

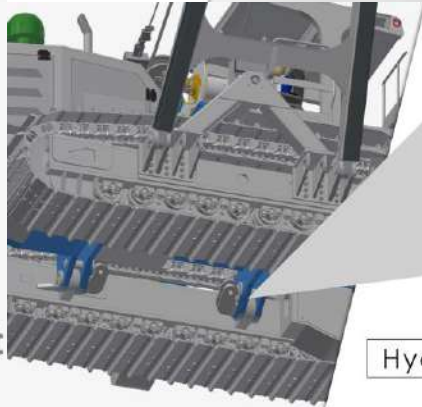
n.2 40 ft Container
n.1 20 ft Container



Quick
Assembly
Disassembly



Lifting Hydraulic Feet



Hydraulic Drive Pins

360° VISIBILITY



ARTICULATED ARM (as option)

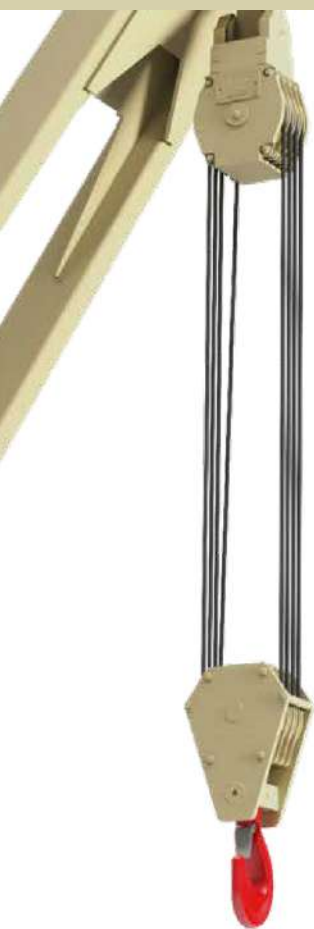
INCREASE STABILITY
ON STEEP SLOPES
INSTALLATION



up to 1 meter



TECHNICAL DATA SHEET



ENGINE

Model	C9.3B Emission regulations according to U.S. EPA Tier 4 Final and EU Stage V emission standards
Rated power	310 kW / 415 HP
Rated speed	1000-2200 rpm
Displacement	9.3 L / 567,5 in ³
Design	In-Line 6, 4-Stroke-Cycle Diesel, Turbocharged-Aftercooled (TA)
Injection system	Direct fuel injection
Operating voltage	24 V
Batteries	2 x 180 Ah / 12 V

TRAVEL DRIVE

Transmission system	Hydrostatic
Travel speed	8 km/h

WEIGHT

Operating weight	60 Ton.
Body Machine	18 Ton.
Undercarriage	20 Ton.
Counterweights	17 Ton.
Boom	4 Ton.
Various	0,9 Ton.

HYDRAULICS

Hydraulic system	
Pump type	- Pump for winches: Variable displacement open circuit - Pump for drive: Variable displacement close circuit - Pump for fan drive: Fixed displacement open circuit
Pump flow max.	- Drive: 600Lt. - Winches: 200Lt. - Fan Drive: 200Lt. - Machine general services: 150Lt.
Pressure limitation	- Drive: 450bar - Machine general services: 250bar - Winches: 350bar - Charge pressure: 32bar

HYDRAULIC WINCH

Cable diameter	19mm
Cable length	120/125 Mt.
Hook speed (up, down)	9/12 Mt./min
Security	Free fall (only for load lifting)

REFILL CAPACITIES

Fuel tank	550Lt.
Urea tank	45Lt.
Hydraulic tank	400Lt.

Electronic anti-tipping system with 12" touch screen display.



LAURINI



Laurini Officine Meccaniche Srl

Località Spigarolo, SNC,
43011 Busseto (PR), Italy

+39 0524 91844

laurini@laurini.com

www.laurini.com